



**MACON COUNTY
BOARD OF
COMMISSIONERS
ELECTION SYSTEM**



5 Electoral Districts



5 At Large Seats



1 At Large Member

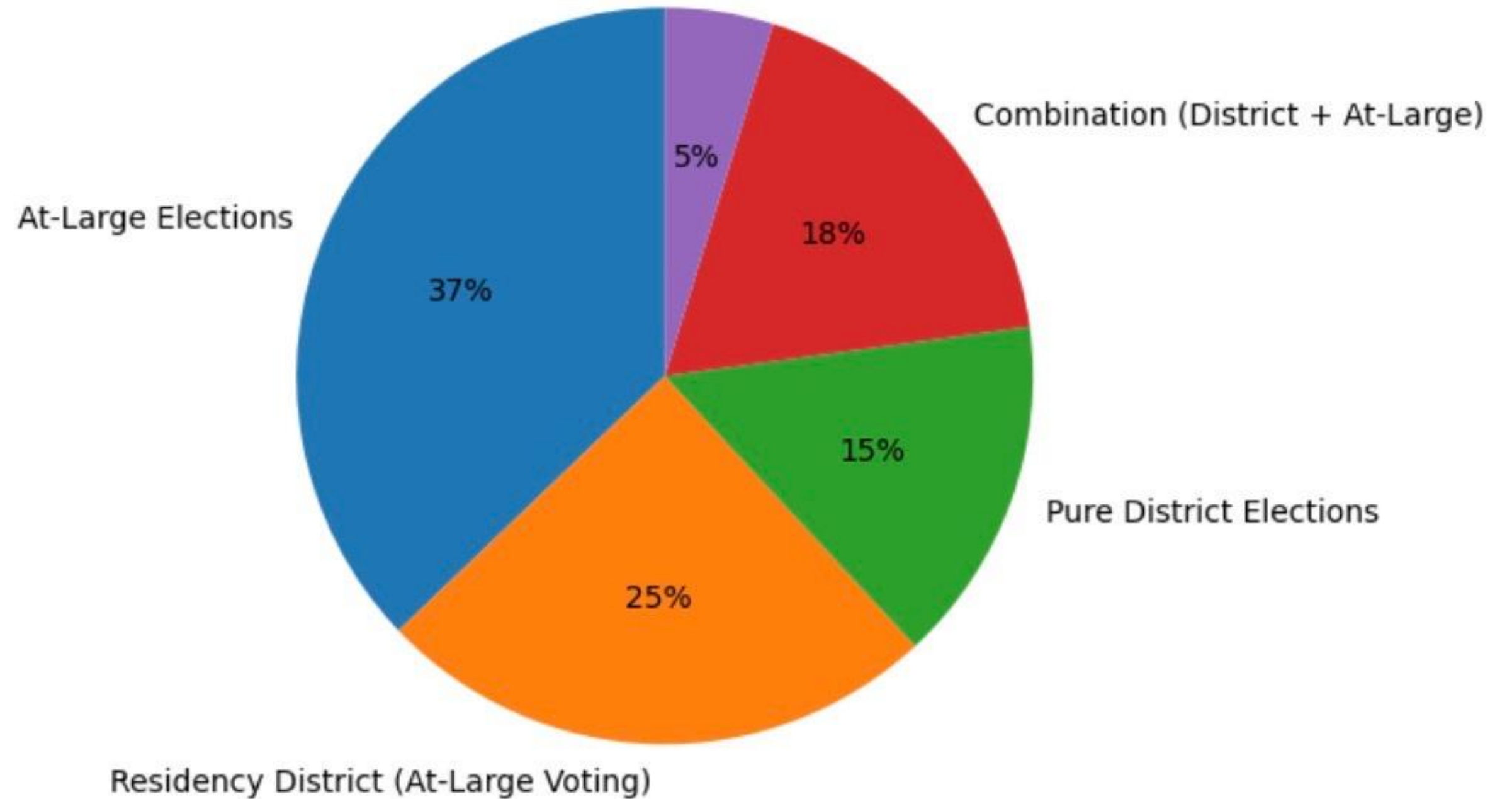


2 At Large Members

Election Cycle 2028

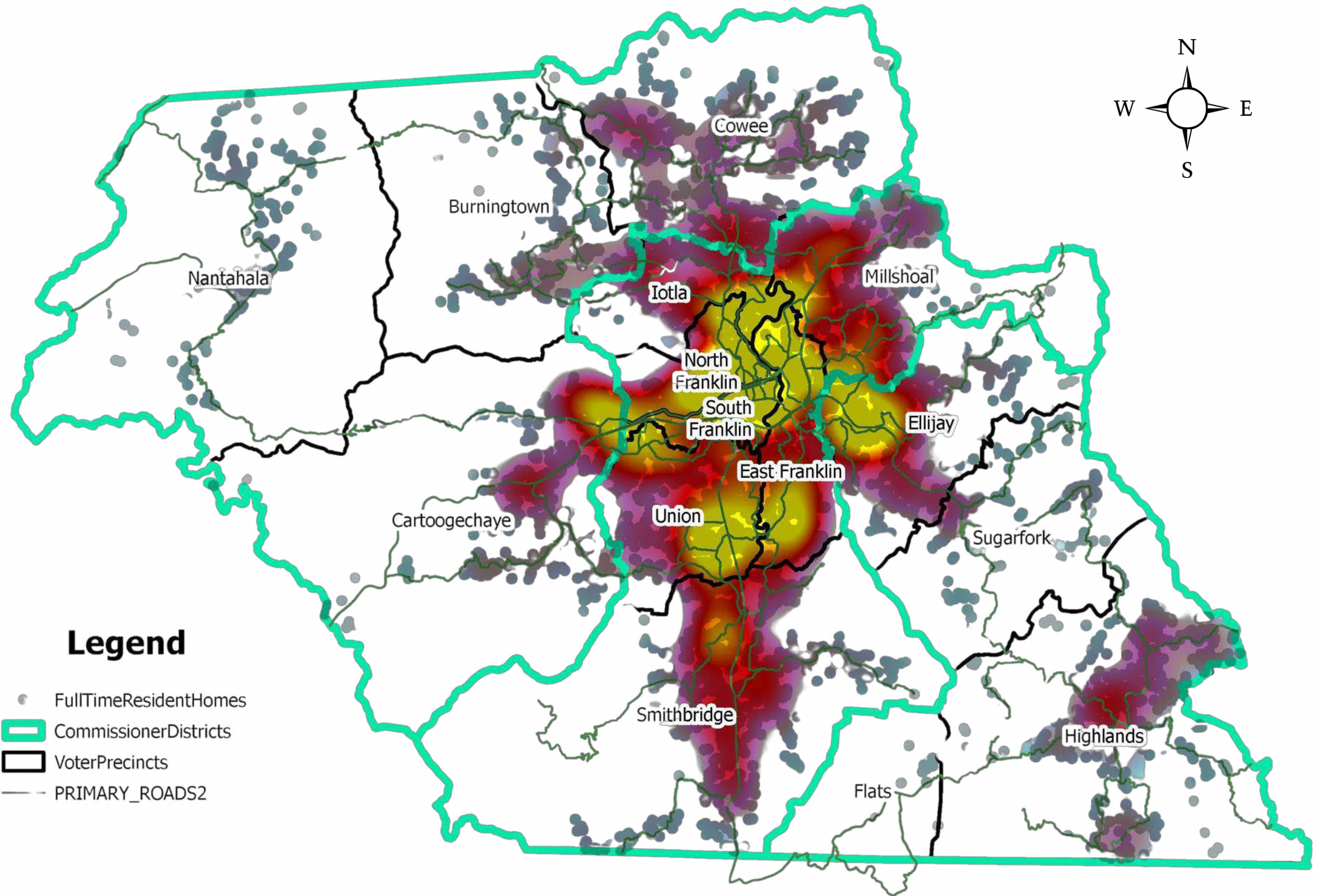
North Carolina counties use several different election structures, but the most common system is at-large voting, followed by residency district.

County Commissioner Election Systems in North Carolina (Approximate Distribution)
Limited Voting Systems

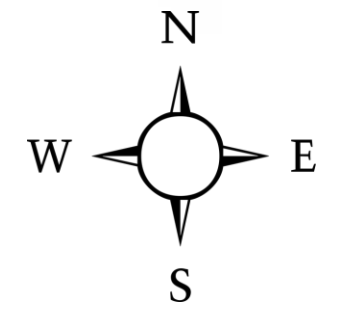


3

DISTRICT MAP (CURRENT)



Voter Precinct Populations 2020 US Census

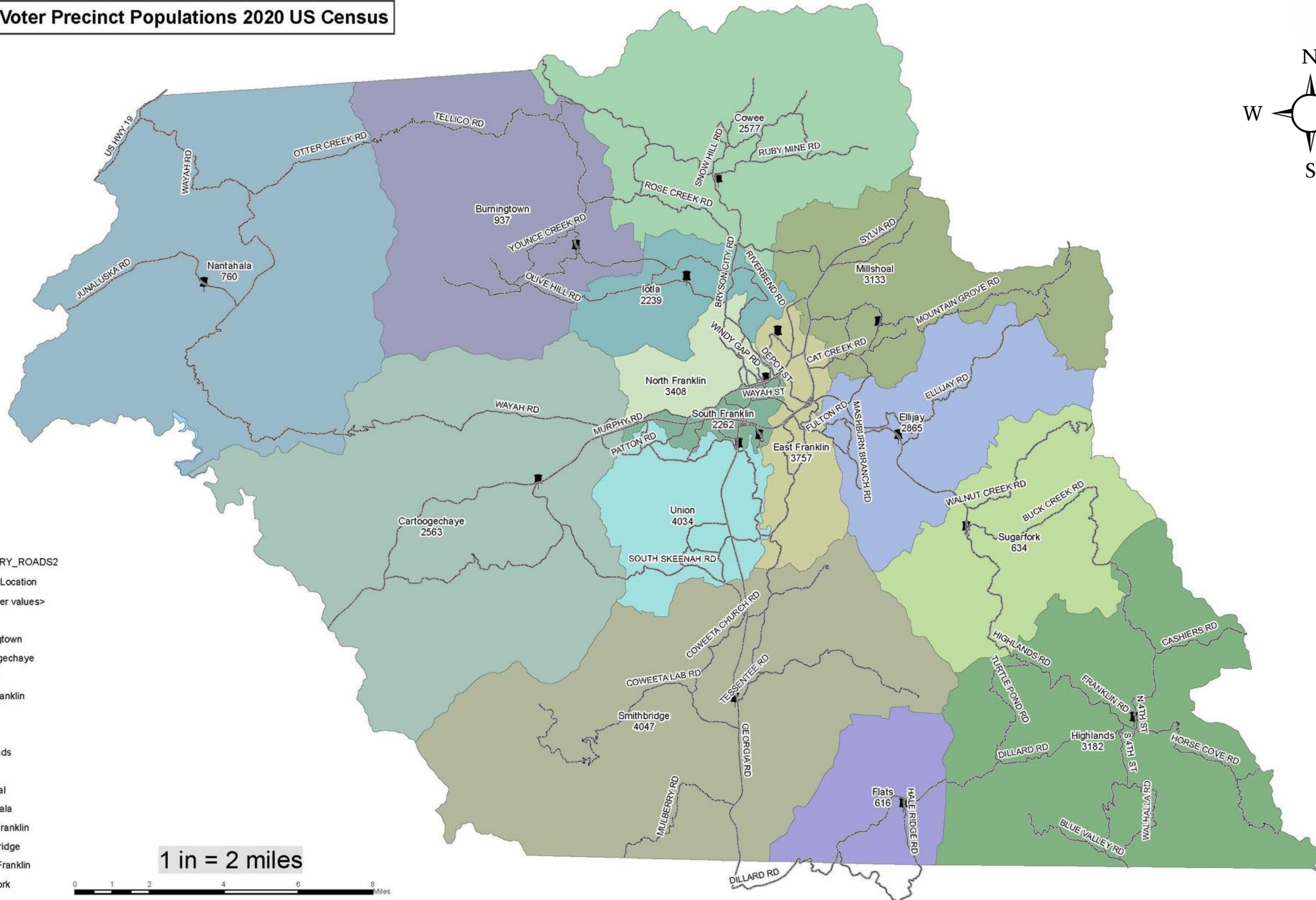


Legend

- PRIMARY_ROADS2
- 📍 Polling Location
- ◻ <all other values>

LABEL

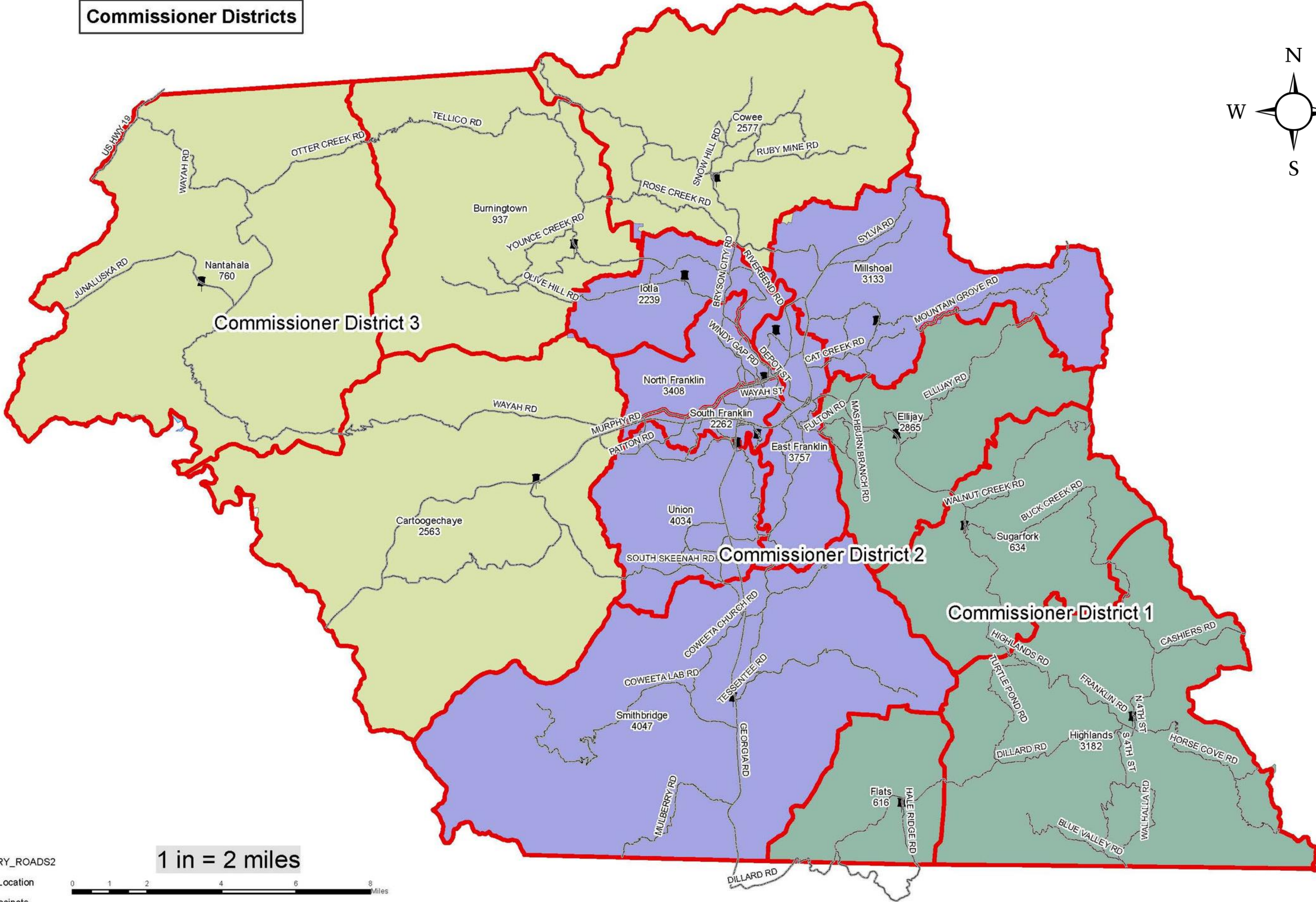
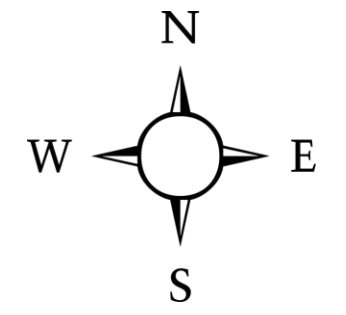
- Burningtown
- Cartoogechaye
- Cowee
- East Franklin
- Ellijay
- Flats
- Highlands
- Iotta
- Millshoal
- Nantahala
- North Franklin
- Smithbridge
- South Franklin
- Sugarfork
- Union



1 in = 2 miles



Commissioner Districts



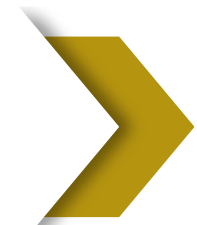
Legend

- PRIMARY_ROADS2
- Polling Location
- ▭ VoterPrecincts

1 in = 2 miles



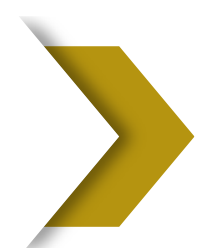
**FIVE
ELECTORAL
DISTRICTS**



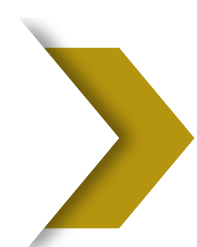
5 Geographical Districts



Approximately Equal Population



**1 Residential Commissioner per
District**



**Seats Elected by County-Wide Vote
in both Primary & General Elections**

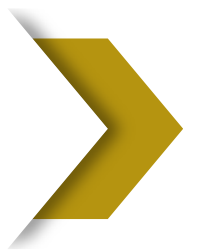
FIVE AT LARGE SEATS



No Districts



Commissioners reside in the County

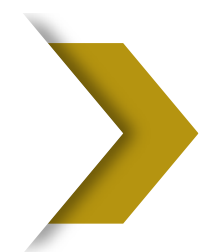


**Seats Elected by County-Wide Vote
in both Primary & General Elections**

ONE AT LARGE MEMBER



4 Geographical Districts



Approximately Equal Population



1 Residential Commissioner Per District (4 year term)



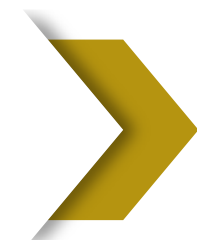
1 Commissioner who lives within the County (2 year term)

At Large Seat

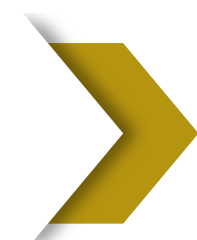


Seats Elected by County-Wide Vote in both Primary & General Elections

TWO AT LARGE MEMBERS



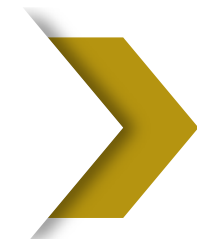
3 Geographical Districts



Approximately Equal Population



1 Residential Commissioner Per District (staggered term)



2 Commissioners who live within the County (staggered term)

*At Large
Seats*



Seats Elected by County-Wide Vote in both Primary & General Elections